

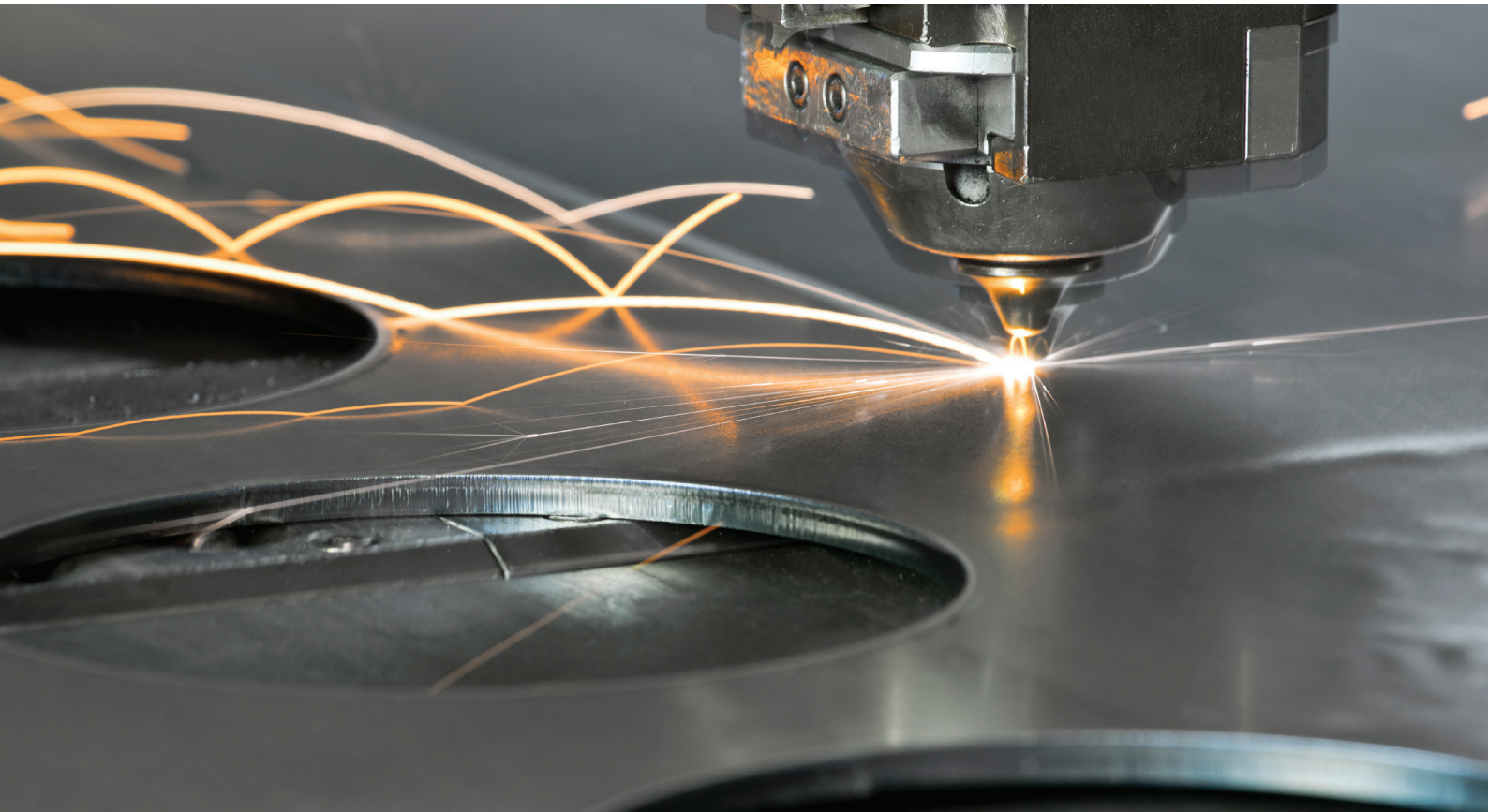


# InfraBuild

*Building futures through sustainable steel*

## New South Wales Processing Capabilities

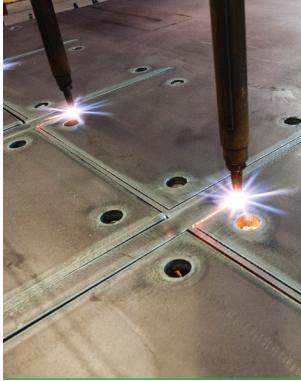
We make it easier to deliver, with steel  
supplied and processed in the one place



Cut-to-length | Haunching | Spot Marking | Stitch Cutting | Notching | Drilling | Oxy Cutting  
HD Plasma Cutting | Pack Cutting | Beveling | Coping | Stamping

[www.infrabuild.com](http://www.infrabuild.com)

# InfraBuild New South Wales Processing Capabilities



## Processing Services:

- Cut to Length
- Haunching
- Notching
- Milling
- Pack Cutting
- Beveling
- Coping
- Oxy Cutting
- Plasma Cutting
- Stamping
- Scribing
- Drilling

## We understand

InfraBuild Steel Centre offers a range of products and services to suit a variety of industries. With extensive experience in the steel industry, our staff can advise on ways to estimate, streamline and tailor steel solutions to deliver more cost-effective outcomes on any project. Having confidence in a supplier to process large or small volumes of steel and manage the complexities and risks to deliver an accurate, on-time project is critical. At InfraBuild Steel Centre we ensure that from your project planning to your steel supply, through to processing and delivery, we are working to optimise your steel usage to minimise waste and maximise cost efficiencies.

## We make it easier

With our processing equipment owned and operated by InfraBuild Steel Centre you can consult with our experts at every stage to manage your processing requirements. Whether its accuracy, tolerance or repeatability you need, we achieve this through fully programmable machinery, and the long term experience of our people. This extensive industry knowledge and national support network ensures you and your projects are receiving the best level of service.

## We deliver

Having steel supplied and processed in the one place can make projects a lot easier. We can source complementary products through our supply chain for your needs. Whether your steel needs are large or small, we offer delivery to site or your warehouse - or you can pick-up from one of our locations.

## Our products

Our range includes structural and tubular steel, reinforcing and merchant bar, sheet and plate as well as pipes, valves and fittings, flooring, complementary products and accessories. We also have the ability to source local and international products with short lead times.

## Design optimisation

As part of the broader InfraBuild network, we also have significant expertise in working with our customers to provide design optimisation to minimise risk whilst reducing waste and cost. Optimising material use can also aid in the sustainability credentials needed for awarding Green Star<sup>®</sup> steel credit points. Customers should talk to InfraBuild Steel Centre early in their project to see how more sustainable practices can be adopted.

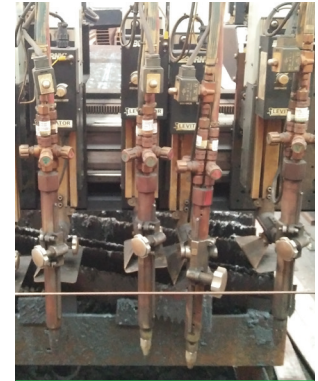


# Oxy Profilers / HD Plasma / Plateline

Processing capabilities:  
 HD Plasma Cutting, Oxy Profiling, Punching, Drilling, Tapping,  
 Bevelling, Counter Sinking & Counter Boring

ProArc Oxy Profiler	Specifications
Sections – Plate	Flame Cutting
Thickness Range	5mm - 180mm
Maximum Plate Size	3200mm x 16500mm
Hole Sizes	Dia. = Thickness x 0.8 (e.g. 20mm hole in 25mm thick plate)
Bevelling	Based on application
Tolerances	+/- 2mm

**Customer benefits:** Ideal for large plates up to 3.2m x 16.5m. Suitable for bridge building applications. Speed and repeatability with six head application.



ESAB HD Plasma	Specifications
Sections – Plate	Plate Cutting
Thickness Range	2mm to 25mm
Maximum Plate Size	3200 mm x 12000mm
Hole Sizes (min. 10 mm)	Dia. = 1.25 x Thickness (e.g. 25mm hole in 20mm thick plate)
Tolerances	+/- 2mm

**Customer benefits:** High precision cutting results.



TIPO B251 Plateline	Specifications
Sections – Plate	Plasma & Flame Cutting, Punching, Drilling, Tapping & Counter Boring
Thicknesses	5mm to 100mm, Plasma cut and punch up to 25mm
Maximum Plate Size	2400mm x 6000mm
Maximum Punching	1000kN, 38mm dia. in 20mm plate
Drilling	15kW, 5mm to 40mm dia.
Marking/Stamping (max.)	80kN, 16mm x 8mm

**Customer benefits:** Generates part identification marks. Ensures high quality precision, productivity and flexibility. Drilling meets specification to RMS compliance. Guaranteed accuracy on large and small parts. Ideal for base plates and connecting plates.



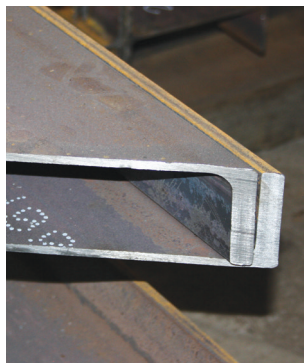
## Plateline / Oxy / Plasma examples:



# Beamlines / Copping

Processing capabilities:

Cut to Length, Drilling, Slotting, Stamping, Copping, Penetrations, Stitch Cutting & Mitre Cutting



Beamline DNB 1203	Specifications
Sections – UB, UC, Welded Sections, Channels, Structural Angles, RHS. CH100 to WB1200	Drilling, Saw Cutting, Mitre Cutting, Milling
Maximum Length	20000mm
Drill Sizes	10mm to 50mm
Mitre Cutting	+/- 45 degrees
Tolerances	+/- 2 mm, +/- 0.25 degree

**Customer benefits:** Allows delivery to site. Minimises workshop preparation of cutting and drilling. Saves workshop time and space.



Beamline DNB 603	Specifications
Sections – UB, UC, Channels, Structural Angles, RHS. RHS 90x90 to UB610	Drilling, Saw Cutting, Mitre Cutting
Maximum Length	18000mm
Drill Sizes	10mm to 50mm
Mitre Cutting	+/- 55 degrees
Tolerances	+/- 2mm, +/- 0.25 degree

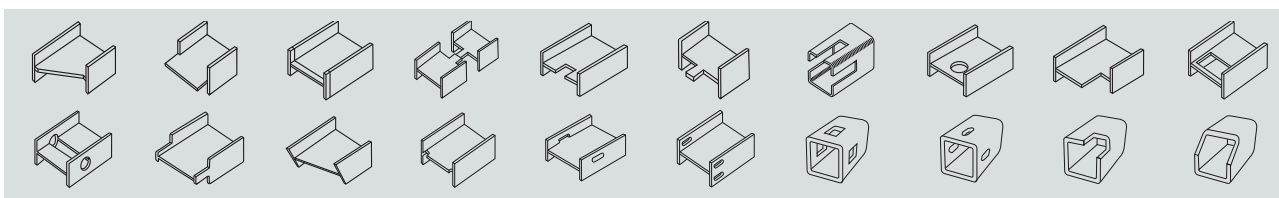
**Customer benefits:** Allows delivery to site. Minimises workshop preparation of cutting and drilling. Saves workshop time and space.



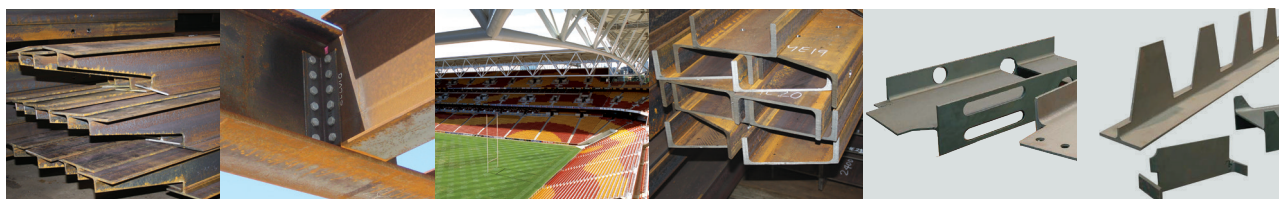
FICEP Copping Beamline 1201 RC	Specifications
Sections – UB, UC, Welded Sections, Channels, Structural Angles. CH100 to WB1200	Oxy Cutting, Stitch & Slot Cutting, Copping, Penetrations & Stamping
Maximum Length	18000mm
Holes	Plasma/Oxy Cut Holes
Cutting	Plasma/Oxy Cut Ends
Tolerances	+/-2mm, +/-0.25 degree

**Customer benefits:** Combines plasma oxy cutting and coping operations on the same system. Reduced fabrication time and cost.

## Types of cut:



## Beamline / Copping Beamline examples:



# Angle Line / Bandsaw / Finishing Services

Processing capabilities:  
Mitre Cut to Length, Punching, Slotting, Stamping, Shearing

Angle Line	Specifications
Section – Angles	Min: 30mm x 30mm x 3mm, Max: 150mm x 150mm x 12mm
Section – Flats	Min: 32mm x 3mm, Maximum: 150mm x 12mm
Maximum Length	12000mm
Shear	1800kN
Maximum Punching	650kN, 30mm dia.
Maximum Stamping	80 kN, 16mm x 8mm

**Customer benefits:** Stamping of part numbers for material identification. Speed of processing frees up workshop capacity. Repeatability and accuracy.



Bandsaw	Specifications
Sections – UB, UC, Channels, RHS, Pipes & Pack Cutting	Saw Cutting
Sections/Pack Size	530x500
Maximum Length	18000mm
Mitre Cutting	+/- 45 degrees
Tolerances	+/- 2mm, +/- 0.25 degree

**Customer benefits:** Pack cutting capability for uniformity of lengths. Ability to cut rail.



## Value-Added Services

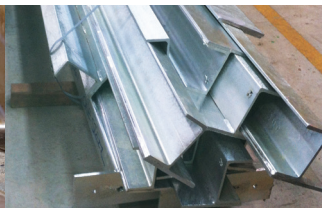
We can also make your project easier and save you time and effort by providing additional value added services.

- **Project Management:** Our experienced team can plan and manage large projects to deliver and meet your requirements.
- **Coating Services:** Whether it is galvanizing, powder coating or painting, we will ensure your steel receives a high quality professional finish, in a timely fashion.
- **Material Testing:** We can provide Charpy Impact testing and Ultrasonic testing.
- **Fabrication Services:** To speed up on-site fabrication we can also provide minor fabrication such as welding of small beams.

### Galvanizing:



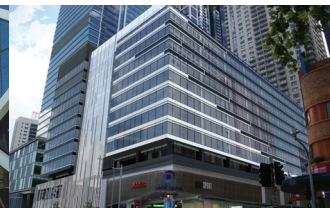
### Fabrication:



### Macquarie Building:



### World Square:



## Processed Products:





## Compliance & Traceability

InfraBuild supplies products that are compliant to the relevant Australian Standards. The quality of our products are checked by NATA endorsed testing laboratories. At all of our manufacturing sites, InfraBuild has third party accreditation to Environmental Management System ISO 14001. In addition, our hot rolled products are all produced at mills with ACRS third party accreditation ensuring certification for reinforcing, pre-stressing and structural steels.

## National Branch Network

Our national branch processing network means that we can provide solutions for you, wherever you need them. You also benefit from the comprehensive service that comes from national account management. So when you're relying on a quality result, you can trust us to deliver it.

Find your  
InfraBuild Steel Centre:

**[www.infrabuild.com](http://www.infrabuild.com)**

---

Please note that any specifications or technical data referred to in this publication are subject to change and/or variation or improvement without notice and no warranty as to their suitability for any use is made. Photographs shown are representative only of typical applications. This brochure is not an offer to trade and shall not form any part of the trading terms in any transaction. Copyright 2022 InfraBuild Trading Pty Limited (ABN 50 007 519 646).

