



# InfraBuild

*Building futures through sustainable steel*

# Tasmania Processing Capabilities

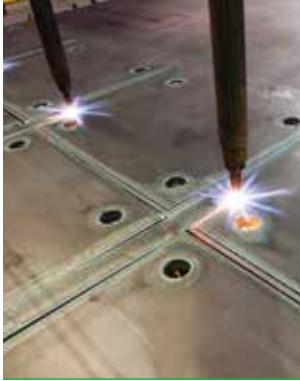
We make it easier to deliver, with steel  
supplied and processed in the one place



HD Plasma Cutting | Cut-to-length | Haunching | Etch Marking | Spot Marking | Stitch Cutting | Tapping  
Notching | Drilling | Oxy Cutting | Pack Cutting | Beveling | Coping | Stamping | Cambering

[www.infrabuild.com](http://www.infrabuild.com)

# InfraBuild Tasmania Processing Capabilities



## Processing Services:

- HD Plasma Cutting
- Counter Sinking
- Cut to Length
- Haunching
- Etch Marking
- Notching
- Milling
- Pack Cutting
- Beveling
- Coping
- Oxy Cutting
- Honing
- Stamping
- Scribing
- Drilling
- Tapping

## We understand

InfraBuild offers a range of products and services to suit a variety of industries. With extensive experience in the steel industry, our staff can advise on ways to estimate, streamline and tailor steel solutions to deliver more cost-effective outcomes on any project. Having confidence in a supplier to process large or small volumes of steel and manage the complexities and risks to deliver an accurate, on-time project is critical. At InfraBuild, we ensure that from your project planning to your steel supply, through to processing and delivery, we are working to optimise your steel usage to minimise waste and maximise cost efficiencies.

## We make it easier

With our processing equipment owned and operated by InfraBuild you can consult with our experts at every stage to manage your processing requirements. Whether its accuracy, tolerance or repeatability you need, we achieve this through fully programmable machinery, and the long term experience of our people. This extensive industry knowledge and national support network ensures you and your projects are receiving the best level of service.

## We deliver

Having steel supplied and processed in the one place can make projects a lot easier. Through our integrated supply chain we can add value to clients by sourcing complementary products through our industry partners and can deliver in an order that suits your schedule. Whether your steel needs are large or small, we offer delivery to site or your warehouse - or you can pick-up from one of our locations.

## Our products

Our range includes structural and tubular steel, reinforcing and merchant bar, sheet and plate as well as pipes, valves and fittings, flooring, complementary products and accessories. We also have the ability to source local and international products with short lead times.

## Design optimisation

As part of the broader InfraBuild network, we also have significant expertise in working with our customers to provide design optimisation to minimise risk whilst reducing waste and cost. Optimising material use can also aid in the sustainability credentials needed for awarding Green Star® steel credit points. Customers should talk to InfraBuild early in their project to see how more sustainable practices can be adopted.



# Local Resources

Processing capabilities:

HD Plasma Cutting, Oxy Profiling, Bevelling, Drilling, Tapping, Honing, Milling

HD Plasma Profiler – 260 Amp	Specifications
Sections – Plate	High Definition Plasma and Oxy
Thickness Range	3mm to 200mm
Number of Torches	1 Plasma Bevel Head + Sing Oxy Head + Oxy Bevel
Maximum Plate Size	3200mm x 13500mm
Tolerances	Standard +/- 2mm



**Customer benefits:** Ensures high quality precise parts, improves productivity and flexibility. Guaranteed accuracy on large and small parts. Countersunk holes with multiple bevel and weld prep, configurations, ie. X bevel, Y bevels. Part identification through etch markings. Common line cutting.

UHD Plasma Profiler 2 – 400 Amp	Specifications
Sections – Plate	Ultra High Definition Plate Cutting
Thickness Range	Capable of piece cutting up 60mm and edge cutting up to 80mm
Number of Torches	One programmable bevel head capable of producing Y, X, K, V & A bevels
Maximum Plate Size	3200mm x 17500mm
Drilling Capability	Up to 35mm Dia. and tapping M6-M24, countersinking capability
Tolerances	Standard +/- 2mm



**Customer benefits:** Ensures high quality precise parts, improves productivity and flexibility. Guaranteed accuracy on large and small parts.

FICEP Beamline 603 DDBV	Specifications
Sections – UB, UC, Welded Sections, Channels, Structural Angles, RHS, SHS	From 100mm to 610mm UB
Machine Capability	Cutting, Drilling, Mitre Cutting, Hard Stamping, CNC Programming, Scribing, Honing, Slotting
Maximum Length	20000mm
Drill Sizes	10mm to 40mm
Mitre Cutting	-60/+60 degrees
Tolerances	Standard +/- 2mm



**Customer benefits:** CNC accuracy replicated directly from NC1 files provided. Sections marked /stamped and delivered in schedule order. Reduction in consumable costs. i.e. broaches, drill bits, lubrication. Aligned with plasma cut/drill CNC capabilities to also supply additional plates e.g. base/connection plates.

## Plateline / Oxy / Plasma examples:

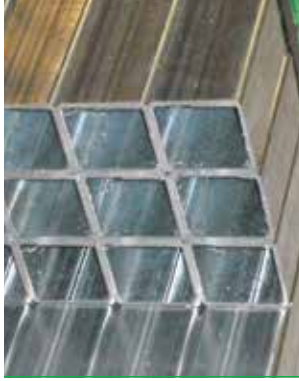


**Note:** Drilling of pilot holes required for piercing above 100mm. \*\* Minimum for multiple heads is 150mm. \*\*\* Minimum thickness can be thinner but is not preferred. \*\*\*\* Max of 3 heads over 50mm thick, 2 heads over 80mm and 1 head over 120mm. Note: smaller widths and lengths should be checked depending on thickness.

# Local Resources

Processing capabilities:

Plasma Cutting, Etching, Mitre Cutting, Saw Cutting, Pack Cutting



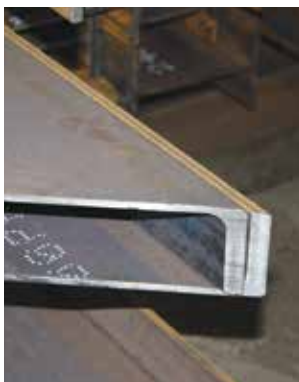
Brobo Cold Saw	Specifications
Sections – RHS, CHS, SHS, Bar	Square Cutting
Thickness Range	8mm to 102mm
Maximum Cut Length	20mm - 8000mm

**Customer benefits:** Ensures high accuracy and flexibility, delivering speed and productivity.



Marvel MK11 Bandsaw	Specifications
Sections – UB, UC, Angles, RHS, Pipe & Flat Bar	Short lengths, Pack Cutting, Structural
Maximum Length	18000mm
Maximum Width	5mm - 500mm (w)
Maximum Height**	10mm - 500mm (h)
Cut Length	50mm - 18000mm
Tolerances	Standard +/- 2mm

**Customer benefits:** Pack cutting capability for uniformity of lengths.



Mitre Cutting	Specifications
Sections – Structurals	Square Cutting
Maximum Width	75mm - 400mm
Maximum Height	50mm - 400mm (h)
Cut Length	1500mm <sup>^</sup> - 18000mm
Tolerances	Standard +/- 2mm

**Customer benefits:** Ensures high accuracy and flexibility, delivering speed and productivity.

**Metal Forming:**



**Coating Services:**



**Laser Cutting:**



**Galvanizing:**



**Note:** Brobo saw can cut 100mm diameter tube or 100 x 100 square tube – max thickness = 4mm. Maximum height when mitre cutting across the flange 250mm. Maximum 5 degree angle mitre cut.

# Regional Resources

Processing capabilities:

Oxy HD Plasma Cutting, Drilling, Stamping, Coping, Notching, Haunching, Stitch Cutting & Mitre Cutting

FICEP Beamline 1203 DD	Specifications
Sections – UB, UC, Welded Sections, Channels, Structural Angles, RHS	Structural sections, Merchant Bar, Rail and Tubular product. From 75mm width up to 1200WB
Machine Capability	Cutting, Drilling, Mitre Cutting, Marking, CNC Programming
Maximum Length	20000mm
Drill Sizes	5mm to 50mm
Mitre Cutting	Up to -45/+60 degrees
Tolerances	Standard +/- 2 mm, Mill, -0 +10mm



**Customer benefits:** FICEP machines are capable of cutting and drilling a wide range of sections and heavily used in the pre-fabrication of all structural beams. CNC programming allows for guaranteed section lengths and holes (within tolerances). High speed bandsaw cutting ensures excellent cut quality and quick turn-around of processed lengths in comparison to other length based cutting methods.

FICEP Coping Beamline 1201 RC	Specifications
Sections – UB, UC, Welded Sections, Channels, Structural Angles	Oxy HD Plasma, Cutting, Drilling, Stitch & Slot Cutting, Haunching, Coping, Notching
Maximum Length	18000mm
Beam Height Min./Max.	80/1220
Flange Width Min./Max.	42/600
Programmable weld prep angles	+/- 45 degree



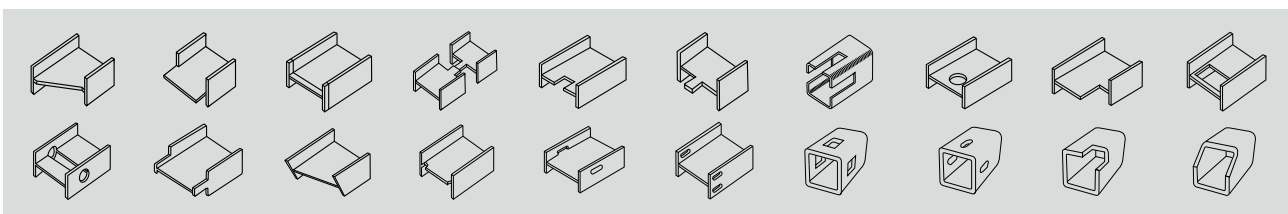
**Customer benefits:** Robotic, Oxy and HD Plasma coper allowing for complex coping and processing solutions. High repeatability and accuracy with complicated cutting operations. Cutting operations can be done in line with drilling units in order to save time

FICEP Beamline 603 BL4	Specifications
Sections – UB, UC, Welded Sections, Channels, Structural Angles	From 100mm to 530mm UB
Machine Capability	Cutting, Drilling, Mitre Cutting, Hard Stamping, CNC Programming
Maximum Length	18000mm
Drill Sizes	10mm to 40mm
Mitre Cutting	-60/+60 degrees
Tolerances	Standard +/- 2 mm



**Customer benefits:** Robotic, Oxy and HD Plasma coper allowing for complex coping and processing solutions. High repeatability and accuracy with complicated cutting operations. Cutting operations can be done in line with drilling units in order to save time.

## Types of cut:



\*Refer to your local Branch or Account Manager for more specific details and tolerances.



# InfraBuild

Building futures through sustainable steel

## Compliance & Traceability

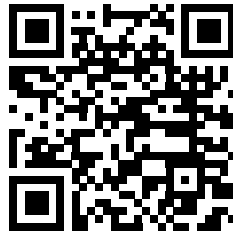
InfraBuild supplies products that are compliant to the relevant Australian Standards. The quality of our products are checked by NATA endorsed testing laboratories. At all of our manufacturing sites, InfraBuild has third party accreditation to Environmental Management System ISO 14001. In addition, our hot rolled products are all produced at mills with ACRS third party accreditation ensuring certification for reinforcing, pre-stressing and structural steels.

## National Branch Network

Our national branch processing network means that we can provide solutions for you, wherever you need them. You also benefit from the comprehensive service that comes from national account management. So when you're relying on a quality result, you can trust us to deliver it.

Find your  
InfraBuild Steel Centre:

**[www.infrabuild.com](http://www.infrabuild.com)**



Please note that any specifications or technical data referred to in this publication are subject to change and/or variation or improvement without notice and no warranty as to their suitability for any use is made. Photographs shown are representative only of typical applications. This brochure is not an offer to trade and shall not form any part of the trading terms in any transaction. Copyright 2022 InfraBuild Trading Pty Limited (ABN 50 007 519 646).