



InfraBuild

We believe in building a
future full of possibilities.

InfraBuild.
Building Possibilities.

Our new brand positions us as the market-leading construction solutions and building partner, where strong relationships will continue to be forged with our customers.

Sanjeev Gupta, Executive Chairman, GFG Alliance



InfraBuild is Australia's largest integrated manufacturer and supplier of steel long products and solutions to the infrastructure, commercial and residential construction, engineering, mining and manufacturing, and agricultural and rural markets, and a leading metals recycling business.

Contents

InfraBuild, a company of LIBERTY	6
End-to-end Integrated Business Model	8
InfraBuild's National Footprint	9
InfraBuild's Businesses	10
Sustainability at InfraBuild	15
InfraBuild in Action: Case Studies	16

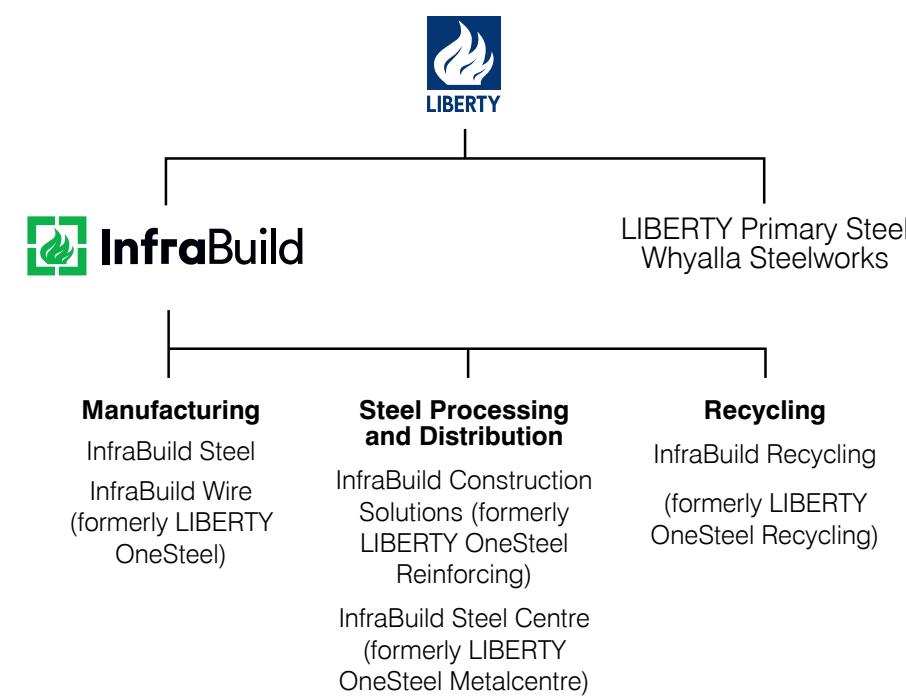
InfraBuild

We are on a mission to inspire and drive nation-building infrastructure and the construction of Australia’s tomorrow using local resources, sustainable solutions, new technology and big thinking.

InfraBuild (formerly LIBERTY OneSteel) includes InfraBuild Construction Solutions, InfraBuild Steel Centre, InfraBuild Recycling, InfraBuild Steel and InfraBuild Wire.

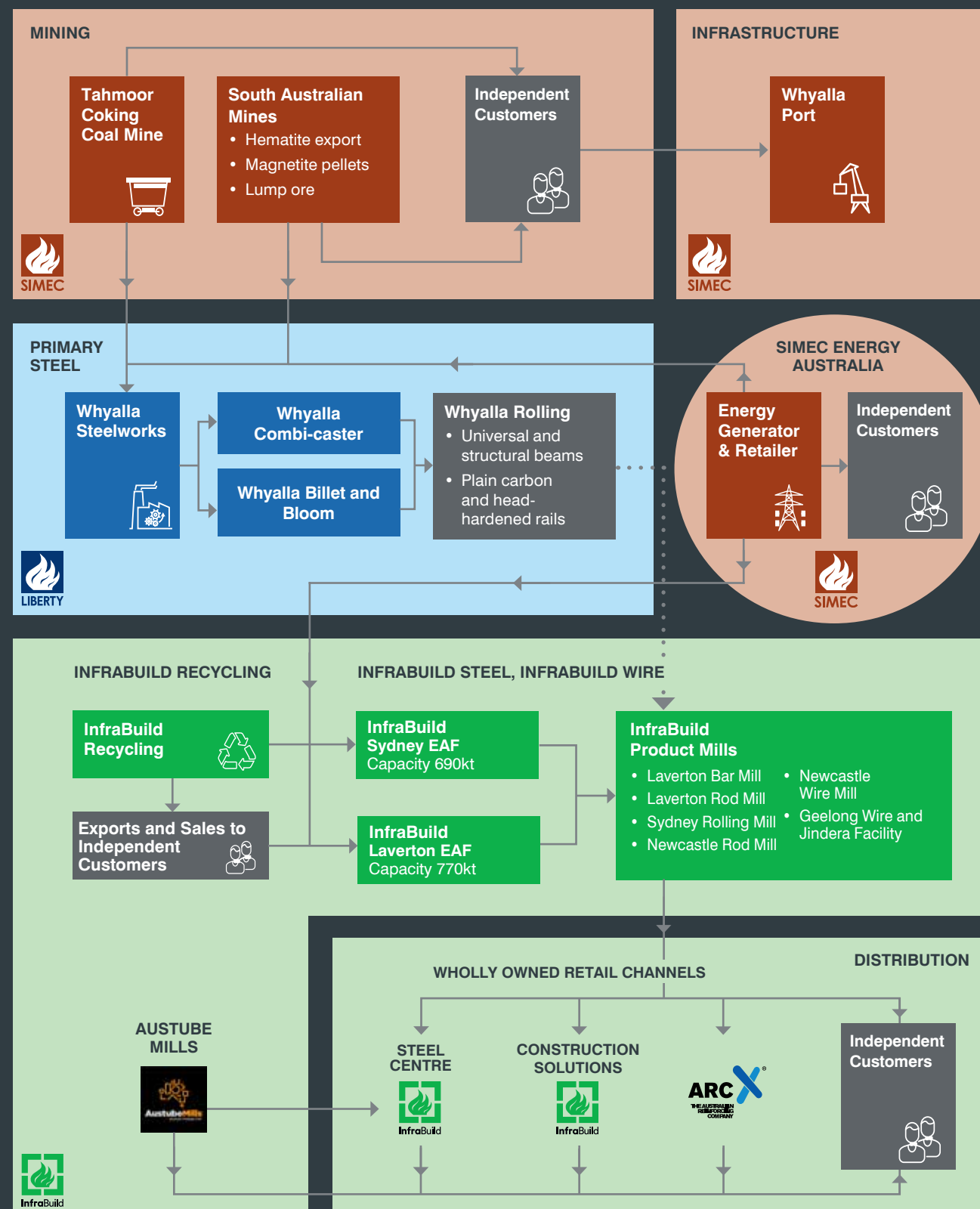
InfraBuild is a company of LIBERTY, a member of the GFG Alliance, an international group of businesses founded and owned by the British Gupta family. GFG combines some of the world’s leading industrial, natural and financial resources, working together towards the delivery of a common industrial strategy.

InfraBuild is Australia’s largest integrated manufacturer and supplier of steel long products and solutions, including reinforcing bar and mesh, merchant bar, pipe and RHS, rod and wire and building products enabling the construction of steel-framed buildings, buildings framed in concrete and nation-building infrastructure projects. InfraBuild Recycling is the second-largest ferrous and non-ferrous recycling business in the country.



End-to-end Integrated Business Model

InfraBuild, a company of LIBERTY, is part of the GFG Alliance's integrated end-to-end business model – a national group of companies including mining, energy, mining, manufacturing, distribution and recycling.



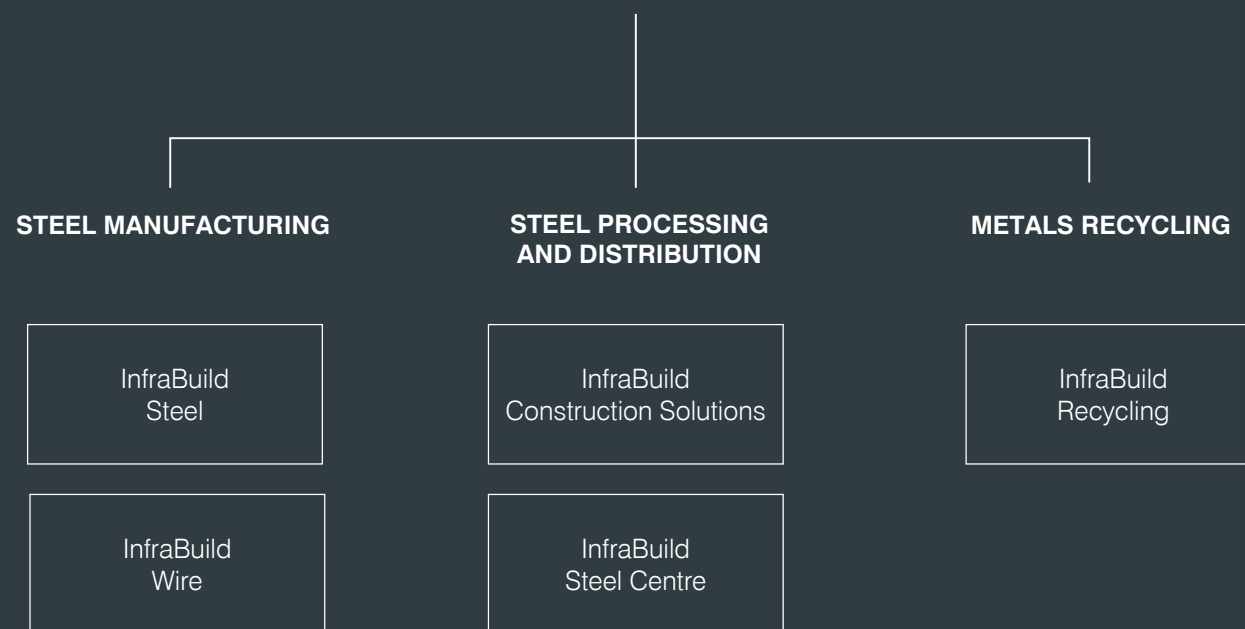
InfraBuild's National Footprint





Australia's largest integrated manufacturer and supplier of steel long products and solutions to the infrastructure, commercial and residential construction, engineering, mining and manufacturing, and agricultural and rural markets, and a leading metals recycling business.

InfraBuild. Building Possibilities.



InfraBuild Steel

Australia's largest manufacturer of steel long products.

InfraBuild Steel (formerly LIBERTY OneSteel) operates two electric arc furnaces with production capacity of approximately 1.5 Mtpa and four rod and bar rolling mills. From our manufacturing sites in Victoria and New South Wales we supply a range of products to steel distributors nationally, including InfraBuild's distribution businesses.

With a flexible, local integrated supply chain, superior product quality and technical expertise we operate as a partner to Australia's construction industry.

InfraBuild's core competencies in metallurgy, steel manufacture, supply chain, logistics, expert consultation and information management support our customers in building Australia's future.

InfraBuild is dedicated to conducting our business to global environmental, social and commercial standards. Our commitment to the environment includes optimising the eco-efficiency of our products through the product lifecycle. This means increasing resource and energy efficiencies in the production and distribution of our products and during the use of steel products. We are committed to the promotion of the recovery, reuse and recycling of steel and other products.

InfraBuild Wire

Australia's leading manufacturer and supplier of wire products.

InfraBuild Wire (formerly LIBERTY OneSteel) is Australia's largest manufacturer of wire for construction, manufacturing and rural applications.

InfraBuild Wire manufactures a range of Low Relaxation Strand and Wire products to a high level of consistency and compliance with Australian Standard AS/NZS 4672 Steel Prestressing Materials.

Low Relaxation Strand is used by the Pre-stressed and Post-tensioned concrete construction industry where large spans are desirable, including bridge beams and planks, viaducts and multi-storey concrete buildings and carparks.

Low Relaxation Wire is a hard-drawn, high-tensile steel wire intended for the prestressing of concrete products including railway sleepers, railway turnouts, bed edging wire and concrete poles and posts. It is compliant for use in Australian Rail Track Corporation (ARTC) projects.

InfraBuild Wire includes fencing solutions, products and accessories with national distribution through regional outlets supplying agricultural products, including fencing, silos and hardware.

Other applications include wire for manufacturing anything from nails to wire rope for massive draglines in mining.

InfraBuild Construction Solutions



Australia's premier supplier of construction solutions supported by a national network of branches.

InfraBuild Construction Solutions (formerly LIBERTY OneSteel Reinforcing) is Australia's premier full-service reinforcing supplier, with a national network of branches supplying quality custom prefabricated reinforcing solutions and an extensive range of reinforcing products and accessories to tier 1 builders and mega infrastructure projects.

With qualified and experienced engineers and project managers around the country, our highly skilled staff are experts in providing technical support, estimating, scheduling and project management and developing reinforcing solutions for commercial, residential and civil construction and mining industries.

Our services include contracting options and supply and fix solutions.

InfraBuild Steel Centre



Australia's premier supplier of metals and building products, with an extensive network of branches covering all major cities and regional areas.

InfraBuild Steel Centre (formerly LIBERTY OneSteel Metalcentre) is Australia's premier supplier of metals and building products, with an extensive network of branches in all major cities and regional areas.

Our experts consult customers at every stage to manage their requirements, utilising our fully programmable processing equipment to meet their accuracy, tolerance and repeatability needs.

Our extensive industry knowledge and experience in engineering and design optimisation minimises risk while reducing waste and cost.

We support over 10,000 customers through our national branch network in key industries including engineering, infrastructure, commercial and residential construction, fabrication, manufacturing, mining and rural.

InfraBuild Recycling



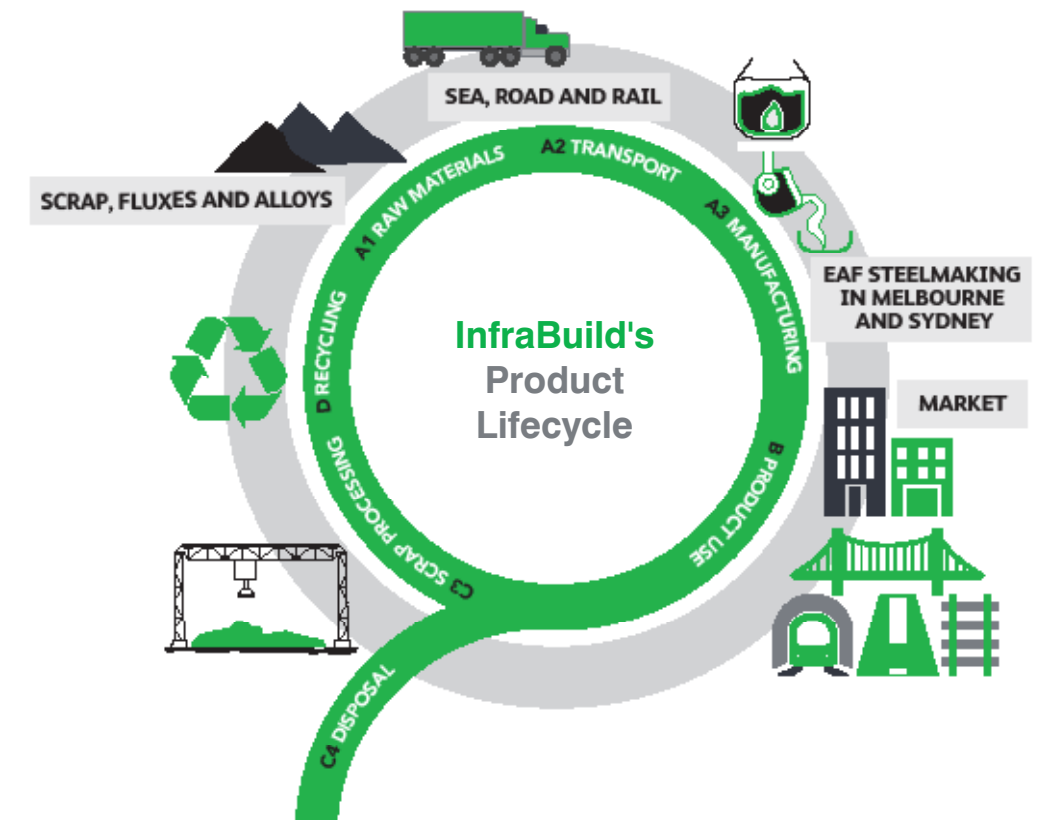
InfraBuild Recycling is a major metals recycler that provides a significant contribution to the raw material requirements of the steel industry and a sustainable alternative to landfill.

InfraBuild Recycling specialises in the safe handling, collection and processing of more than 1.4 million tonnes of ferrous and non-ferrous scrap metal every year, distributing it to InfraBuild Steel's Australian steel mills and international customers.

InfraBuild Recycling is a significant contributor to the raw material requirements of Australia's steel industry and provides a sustainable alternative

to landfill, capturing the full value-in-use of the materials recycled.

InfraBuild Recycling operates nationally from 22 locations in Australia as well as from three in Asia, and has six trading offices in key supply and sales market regions across the globe.



Sustainability at InfraBuild

The use of sustainable materials in modern Australian building construction is no longer a negotiable. Structurally efficient buildings that maximise resources and make the most of usable space now have an essential role to play in creating green cities that citizens can use now and into the future.

InfraBuild is dedicated to conducting our business to global environmental, social and commercial standards. Our commitment to the environment includes optimising the eco-efficiency of our products through the product lifecycle.

This means increasing resource and energy efficiencies and the use of sustainably generated energy from GFG Alliance's SIMEC Energy Australia in the production and distribution of our products, as well as during the use of steel products.

We are committed to the role played by steel in the circular economy, including the promotion of the recovery, reuse and recycling of steel and other products.

InfraBuild's Environmental Product Declarations (EPDs) are independently verified and are premier contributors to our holistic commitment to the environmentally sustainable manufacture and application of our products.

Recognising our customers' needs and the increasing demand for standardisation and greater transparency around environmental performance, InfraBuild is proud to publish the sustainability credentials of our supply chain and products.

We have four EPDs:

- Reinforcing Rod, Bar and Wire
- Reinforcing Bar and Mesh (InfraBuild Construction Solutions)
- Reinforcing Bar and Mesh (ARC)
- Hot Rolled Structural Products (InfraBuild Steel Centre)

InfraBuild's EPDs comply with the requirements of a valid EPD recognised in the Green Star Design Rating Tool (Green Building Council of Australia) and the IS® Rating Tool (Infrastructure Sustainability Council of Australia).

InfraBuild in Action: Case Studies

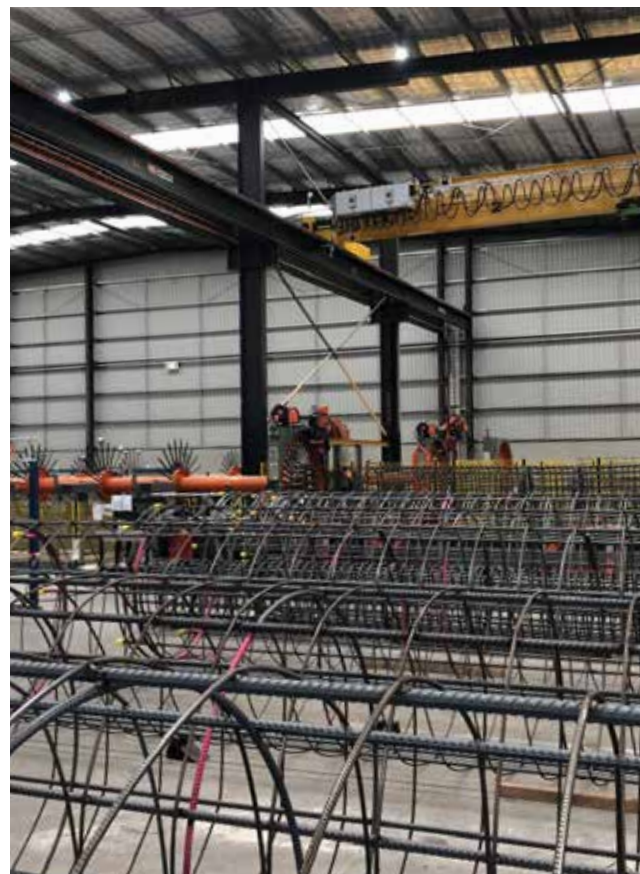
Barangaroo

New South Wales, 2018

Lendlease's Barangaroo South project was named the 2018 Australian Development of the Year at the Property Council of Australia's Innovation and Excellence Awards. In total, the project won five awards, including the InfraBuild-sponsored Best Mixed Use Development Award.

InfraBuild played a major role during the 4.5-year supply period of Lendlease's Barangaroo project and has continued to do so in subsequent phases of the development. InfraBuild Construction Solutions supplied more than 77 million different steel products including 45,000 tonnes of reinforcing steel in total. All product was delivered with ACRS certification. Processes were implemented to ensure a 20 per cent reduction in embodied carbon was achieved for reinforcing steel, which contributed to the project's 6 Star Green Star rating.





West Gate Tunnel

Victoria, 2019

InfraBuild has been awarded the contract to supply 92,200 tonnes of steel for the West Gate Tunnel Project between Docklands and Laverton in Melbourne.

The steel will be used to reinforce the lining of the Project's twin tunnels, bridge segments, noise walls and retaining walls.

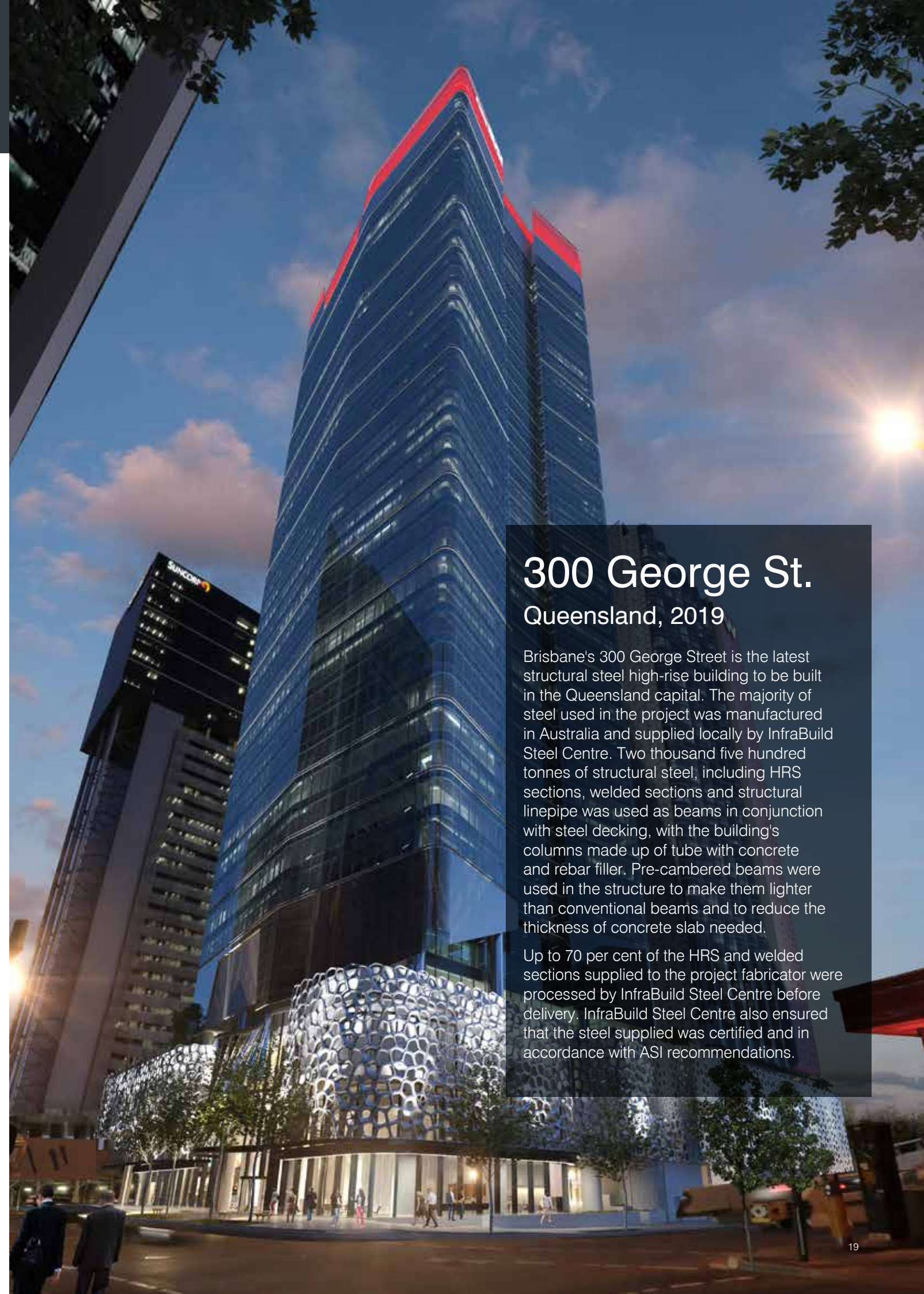
InfraBuild has scaled up operations at its Melbourne Construction Solutions facilities to meet the demands of the Project over the next four years. An additional 150 staff have been employed and specialist equipment commissioned to create customised prefabricated engineered steel mesh. InfraBuild will provide ongoing technical expertise to the Project.

Metro Tunnel

Victoria, 2019

Up to 250 steel reinforcement cages will be installed in each of the five stations of Melbourne's 9km Metro Tunnel. InfraBuild Construction Solutions is supplying up to 150 tonnes of prefabricated cages to the project daily; a total of 22,500 tonnes. Sixteen thousand tonnes of piling cages will be supplied to the Parkville, State Library and Town Hall stations, and 6500 tonnes of diaphragm wall cages for the North Melbourne and Anzac stations.

The D-Wall cages are constructed from Australian-manufactured InfraBuild steel in InfraBuild Construction Solutions' Melbourne processing facility. Innovative Glass Fibre Reinforced Polymer (GFRP) cages are inserted within the cages as an advantageous replacement for conventional steel rebars that allow the Tunnel Boring Machine (TBM) to break through the diaphragm walls and secant piles without inflicting damage to either, rapidly connecting the rail tunnels to the stations.



300 George St. Queensland, 2019

Brisbane's 300 George Street is the latest structural steel high-rise building to be built in the Queensland capital. The majority of steel used in the project was manufactured in Australia and supplied locally by InfraBuild Steel Centre. Two thousand five hundred tonnes of structural steel, including HRS sections, welded sections and structural linepipe was used as beams in conjunction with steel decking, with the building's columns made up of tube with concrete and rebar filler. Pre-cambered beams were used in the structure to make them lighter than conventional beams and to reduce the thickness of concrete slab needed.

Up to 70 per cent of the HRS and welded sections supplied to the project fabricator were processed by InfraBuild Steel Centre before delivery. InfraBuild Steel Centre also ensured that the steel supplied was certified and in accordance with ASI recommendations.



Optus Stadium

Western Australia, 2018

InfraBuild Steel Centre collaborated closely with fabricator Civmec to supply 16,000 tonnes of structural steel to construct the five-level Perth Optus Stadium superstructure. Another 13,500 tonnes of reinforcing steel was supplied by InfraBuild Construction Solutions. The structural steel supplied for the stadium frame included welded steel beams, steel plate and large-diameter circular hollow sections (CHS). Additional assorted steel materials were supplied to Civmec in the form of hot rolled structural (HRS) sections, merchant bar and tubulars.

InfraBuild Steel Centre was also engaged by Civmec to supply 900 tonnes of seamless pipe for the construction of the stadium's Matagarup footbridge. InfraBuild Steel Centre staff were embedded in the Civmec office and worked closely with the project managers to meet the complex demands of the build.



WestConnex

New South Wales, 2018

InfraBuild's integrated supply chain has been extensively involved in Sydney's massive WestConnex project.

InfraBuild Steel Centre's state-of-the-art coping machine facilitated the supply of several thousand tonnes of universal and welded columns to the St Peters Interchange. One thousand six hundred piles, each of them 36 metres long, will support the road pavement and bridge infrastructure at the site.

InfraBuild supplied the high-quality steel bar used in the manufacture of over 150,000 bolts, which are used to reinforce the project's massive 9km twin tunnels.

Structural steel was supplied by InfraBuild Steel Centre to the award-winning Concord Road to M4 West On-Ramp. The scale and complexity of the project required precision engineering of welded beams to tight tolerances, and bulk processing to meet the fast-turnaround delivery requirements of the project.



NorthConnex

New South Wales, 2018

Sydney's 9km NorthConnex will be Australia's deepest road tunnel when complete. InfraBuild Construction Solutions manufactured, processed and delivered to the project complex and adaptable steel reinforcing lattice girders that formed an integral part of the primary passive ground support design, providing a safe work area to continue tunnel excavation.

A total of 470 complete Romtech® lattice girder sets and 30 leg extensions in 12 different profiles was supplied to the project. Peak supply was 30 lattice girders per week. InfraBuild Construction Solutions' extensive training and education of its prefabrication teams meant that it achieved compliance to AS1554.3. Its integrated supply chain, from manufacture to prefabrication and delivery, allowed for full traceability and compliance of materials and prefabrication to Australian Standards, with ACRS certification.



80 Collins Street

Victoria, 2019

Due for completion in 2020, Melbourne's 80 Collins Street building features a unique cantilevering design and a large floor area that projects over heritage street levels before rising a further 31 levels. The support structure had to deal with substantial loads, requiring significant heavy steel product and fabrication.

InfraBuild Steel Centre processed and supplied 3000 tonnes of HRS (hot rolled structural) steel, as well as 1000 tonnes of welded structurals and 500 tonnes of plate, tube and merchant bar to the project fabricator. Processing included cutting, drilling and notching on InfraBuild Steel Centre's robotic coper, beamline and bandsaw.

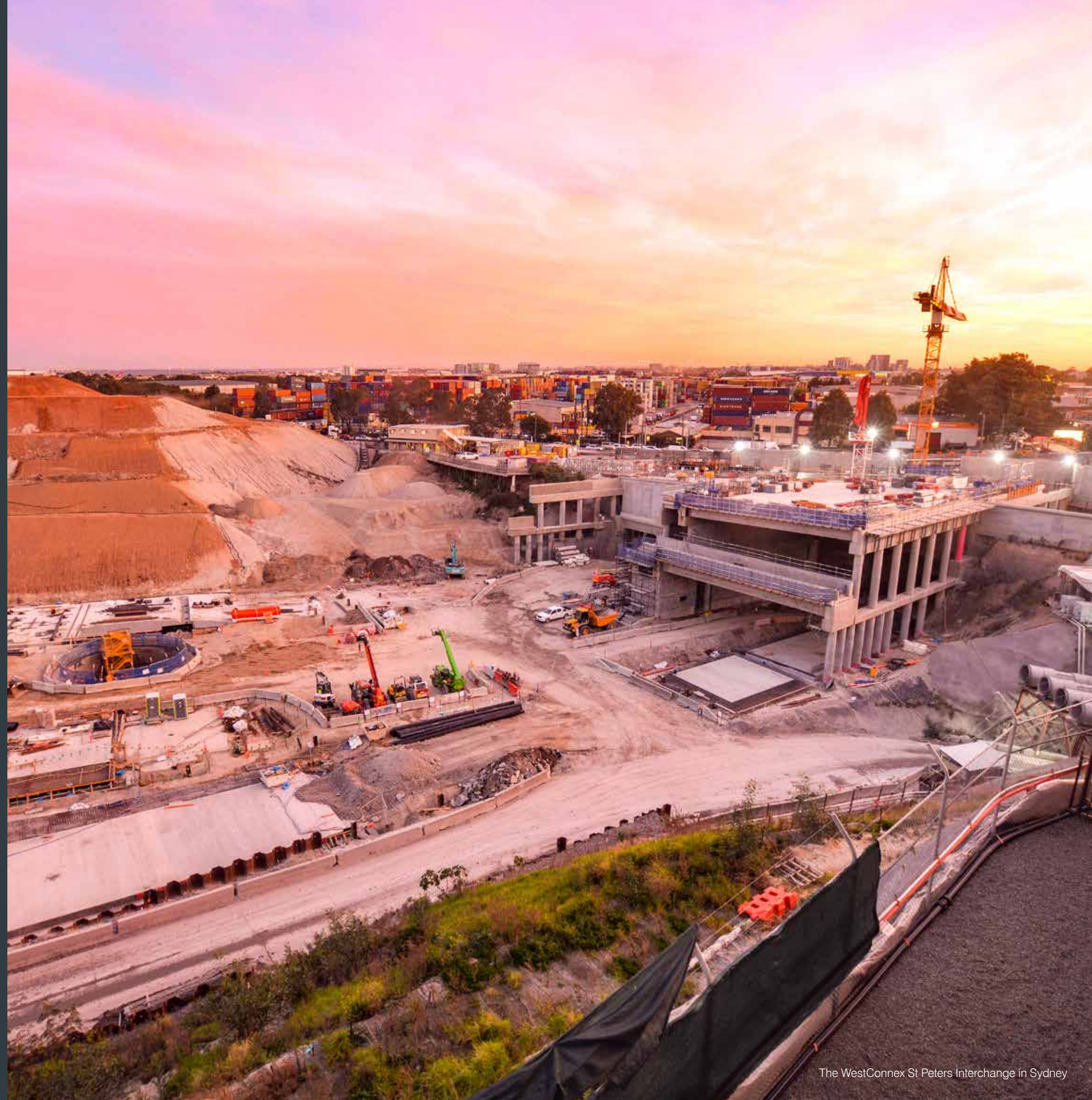
Disclaimer

InfraBuild Trading Pty Limited (ABN 50 007 519 646) is an Australian Company on behalf of itself and all other companies for which InfraBuild Global Holdings Pte Ltd is the ultimate holding company ("InfraBuild").

This publication has been prepared by InfraBuild Trading Pty Limited (ABN 50 007 519 646).

Please note that any specifications or technical data referred to in this publication are subject to change and/or variation or improvement without notice and no warranty as to their suitability for any use is made. Users of this publication, to ensure accuracy and adequacy for their purposes, are requested to check the information provided in this publication to satisfy themselves as to its appropriateness and not to rely on the information without first doing so. Unless required by law, the company cannot accept any responsibility for any loss, damage or consequence resulting from the use of this publication. Photographs shown are representative only of typical applications, current at July 2019. This presentation/publication is not an offer to trade and shall not form any part of the trading terms in any transaction.

© Copyright 2019 InfraBuild Trading Pty Limited (ABN 50 007 519 646). All rights reserved. Reproduction in whole or in part in any form or medium without the express written permission of InfraBuild is prohibited. All images and content, trademarks or registered trademarks are the property of InfraBuild.





We are on a mission to inspire and drive
nation-building infrastructure and the
construction of Australia's tomorrow using
local resources, sustainable solutions,
new technology and big thinking.

InfraBuild. Building Possibilities.

www.infrabuild.com