



Media Kit

November 2023



InfraBuild

Building futures through sustainable steel

We are InfraBuild

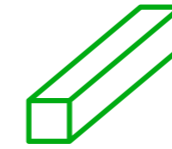
We have been supplying quality Australian steel for more than 100 years.



We are Australia's largest processor and distributor of steel long products, including reinforcing bar, reinforcing mesh, tubular and hollow sections, merchant bar and wire products.

As Australia's largest vertically integrated, electric arc furnace-based long steel manufacturer we provide an unmatched competitive advantage to our customers and partners in the large-scale, nation-building infrastructure, building, construction, rural and mining sectors.

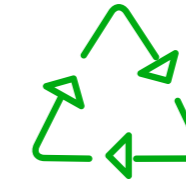
Our 100+ years of continuous operation has seen us forge a reputation for excellence and a proud history of survival during the tough times and thriving thereafter.



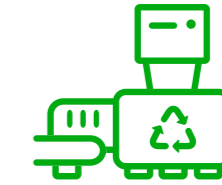
Largest Australian long products steel manufacturer



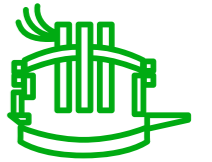
2nd
largest scrap recycler in Australia



1.4mt +
of recycled steel per annum in Australia



approx **3.2mt**
Sold steel and scrap



2
Electric Arc Furnaces



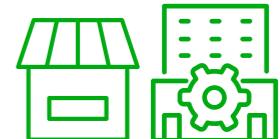
14,000+
Wholesale and retail customers



5,000+
Employees



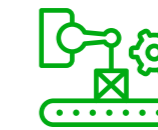
150+
Sites globally



109
Retail and processing sites



34
Recycling and brokerage sites



11
Prized assets including tube wire and rolling mills

Where we are



34
Recycling and
brokerage sites

140+
locations
Australia wide

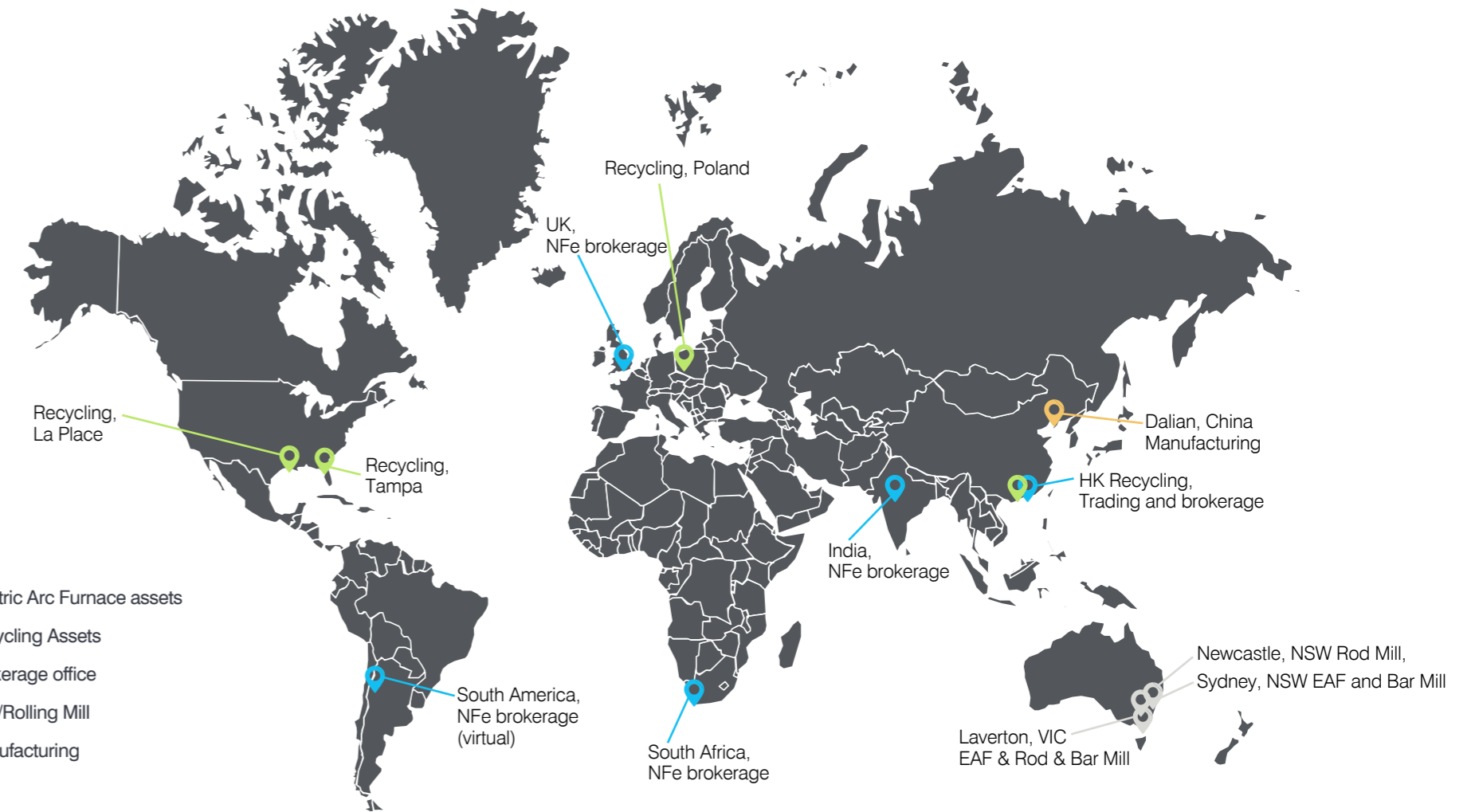
109
Retail and
processing sites



- Corporate Offices
- Recycling Sites
- Manufacturing Sites
- Distribution Sites



Our global footprint



- Electric Arc Furnace assets
- Recycling Assets
- Brokerage office
- EAF/Rolling Mill
- Manufacturing



Our operations

We are Australia's only fully vertically integrated steel manufacturer, spanning scrap metal recycling, steel manufacturing and downstream distribution.



Recycling

Our vertically integrated domestic supply chain consists of 26 scrap metal recycling sites across Australia, including four shredders.

Our recycling division contributes about 1.4 million tonnes of scrap metal annually into our steelmaking operations.

Internationally, we own and operate recycling centres in Poland, the US and Hong Kong. Additionally, we have global scrap metal traders working in India, South Africa, Netherlands, Spain and the UK.

Manufacturing

We have an integrated steelmaking and manufacturing network, comprising two steel long product producing electric arc furnaces (Rooty Hill, Sydney; and Laverton, Melbourne) and eight product manufacturing mills (bar, rod, rolling, tubular and wire) in Laverton, Geelong, Rooty Hill, Newcastle and Brisbane.

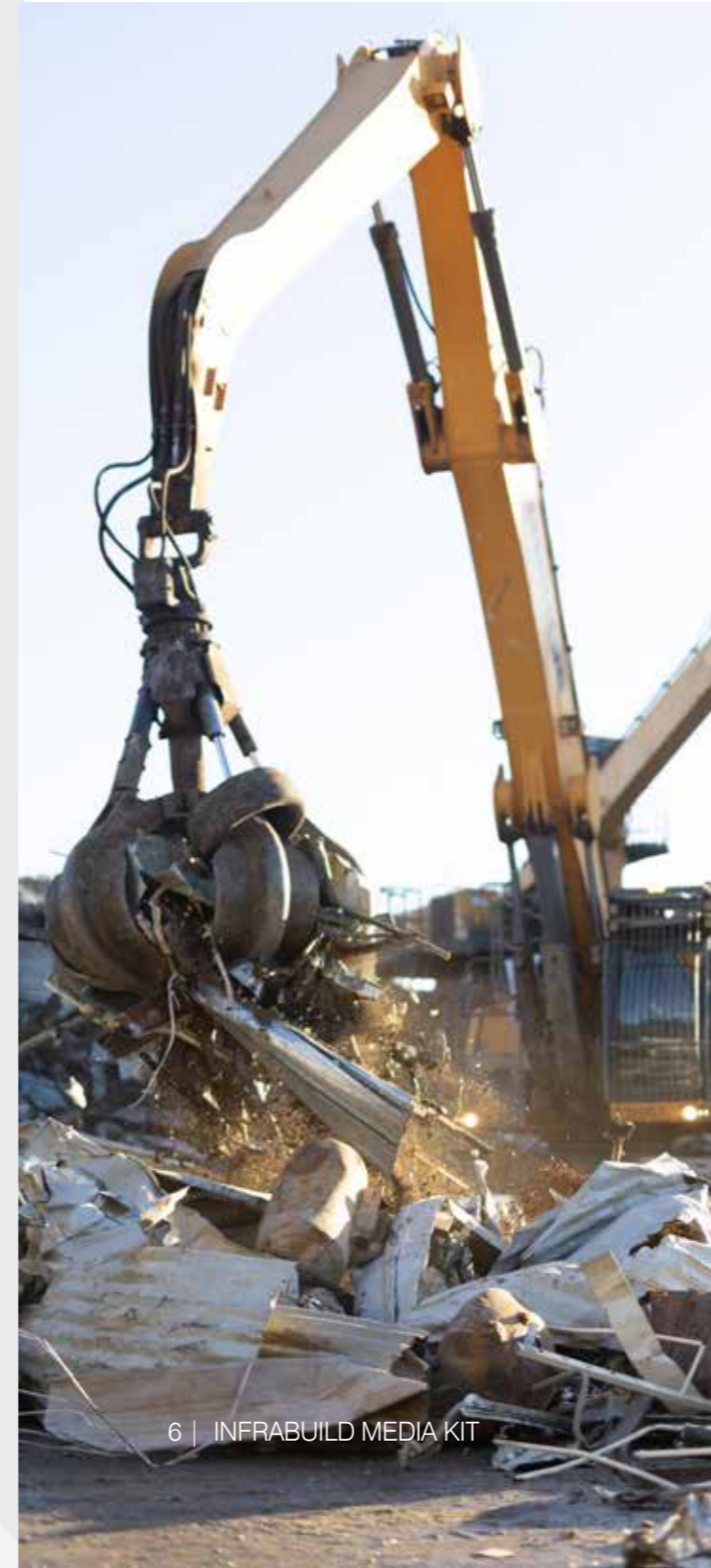
We also have a manufacturing facility in Dalian, China.

Distribution

From our manufacturing sites on Australia's east coast, we supply a range of steel products to distributors and processors nationally.

We have significant national footprint through our network of 109 retail and processing sites across the country and provide quality products and technical expertise with partners in the Australian construction, residential, mining, transport, manufacturing, infrastructure and agricultural industries.

Our Steel in Concrete distribution stream includes InfraBuild Reinforcing, and the Australian Reinforcing Company.



Our service brands



Our product brands



Sustainability

InfraBuild is redefining steel as a green building material and helping companies improve the sustainability credentials of their projects.



InfraBuild's CN30 (carbon neutral by 2030) objective sets a clear target for InfraBuild to be a low carbon emission, carbon neutral, steel manufacturer by 2030.

Investors and other stakeholders are increasingly seeking to better understand the implications of climate-related risks on businesses' long-term earning potential and viability. Climate-related risks include both the risks related to transitioning to a lower-carbon economy and the risks related to the physical impacts of climate change.

Decarbonisation

InfraBuild is redefining steel as a green building material and is helping companies everywhere improve the sustainability credentials of their projects.

We are committed to reducing our embodied carbon footprint by making sustainable steel and to the role played by steel in the circular economy, including the promotion of the recovery, reuse, and recycling of steel and other products.

Recycling scrap metal drives material circularity, reduces emissions, saves on natural resources, and diverts scrap from landfill.

Our electric arc furnaces (Rooty Hill in Sydney, and Laverton in Melbourne) use recycled scrap metal to manufacture steel products with lower levels of embodied carbon compared to those made by traditional steelmaking methods.



Sustainable Steel, Sustainable Communities

[InfraBuild's Sustainability Report 2022](#) is available for download from the InfraBuild website.

We are building futures through sustainable steel.

“ we recognise the role we must play as a carbon intensive business to contribute to Australia's transition to a low emission economy and support our customers and suppliers on their own decarbonisation journeys.”

Our group performance



The financial function plays a key role in ensuring that the appropriate funding is available to support investment in our people, assets, and market offer.

FY23 Results

Comparison made with FY22 Results

The continued disciplined approach to safety and employee engagement, productivity improvements, innovation and customer service excellence has contributed to the strong performance during the period as commodity prices began moderating and residential building approvals reached their peak.

5.9	11.4%	A\$651m	A\$5,686m	23.2%
Safety (TRIFR*)	EBITDA margin	EBITDA	Net revenue	ROIC (LTM)
down from 6.7	up 34 bps	down 2%	down 5%	

- *TRIFR: Total Recordable Injury Frequency Rate
- Comparison is against FY22



InfraBuild CEO Francisco Irazusta said:

“ InfraBuild has maintained disciplined momentum throughout the year which is a result of our team’s hard work on workplace safety, operational excellence, and customer experience.

These results have allowed us to invest back into the business to drive the Carbon Neutral 2030 objective, deliver customer service improvements, and innovation, positioning us well as market conditions moderate off the highs of the past few years.

Our industry partnerships



InfraBuild is a founding member of the Australian Steel Institute, the nation's peak body representing the entire steel supply chain from the manufacturing mills right through to end users in building and construction, heavy engineering and manufacturing.

We have been continuously manufacturing in Australia for more than 100 years and through the decades have forged and maintained strong partnerships, ties and memberships with industry groups and associations across relevant sectors.

Our industry partnerships



Our leadership



Francisco Irazusta, CEO and Executive Director

Francisco Irazusta joined InfraBuild in October 2023 as Chief Executive Officer and Executive Director, and is a member of the Board.

Francisco has more than 25 years' experience in senior leadership positions across building products, manufacturing, mining, and steel industries globally.

Prior to joining InfraBuild, Francisco was Chairman and CEO of Spanish seamless pipe manufacturer and distributor Tubos Reunidos, where he oversaw the business's return to profit in 2022.

He previously served as Interim Chief Executive Officer of Fletcher Building; a listed building products manufacturer based in New Zealand. Prior to this he was Chief Executive of Fletcher Building's International Businesses, and Chief Executive of Light Building Products.

Francisco has a Master of Science in Industrial Engineering from Alfred University, New York, and a Bachelor of Applied Science in Ceramic Sciences and Engineering from State University of New York, at Alfred University, New York, USA.



Images



For high resolution image requests please contact:

infrabuildcommunications@infrabuild.com or

visit the [InfraBuild image gallery](#) on the website to download images and video.



Francisco Irazusta
CEO and Executive Director



Recycling



Manufacturing – EAF

Contact



For Media Enquiries

Lisa Kable

lisa.kable@gfgalliance.com



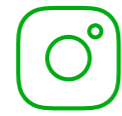
Website:
infrabuild.com



LinkedIn:
linkedin.com/infrabuild-australia



FaceBook:
facebook.com/infrabuild1



Instagram:
instagram.com/infrabuild_aust



YouTube:
youtube.com/@infrabuild6402



Twitter:
twitter.com/infrabuild_aust



InfraBuild

Building futures through sustainable steel