



InfraBuild

Building futures through sustainable steel



We are InfraBuild



We have been supplying quality Australian steel for more than 100 years.

We are Australia's largest processor and distributor of steel long products, including reinforcing bar and mesh, tubular and hollow sections, merchant bar and wire products.

As Australia's largest vertically integrated, electric arc furnace-based long steel manufacturer, we provide an unmatched competitive advantage to our customers and partners in the nation-building infrastructure, building, construction, rural and mining sectors.

We create value for all our key stakeholders as we continue to lead the journey towards making sustainable steel in Australia and building strong, local communities and economies across the country.

We are nation builders.



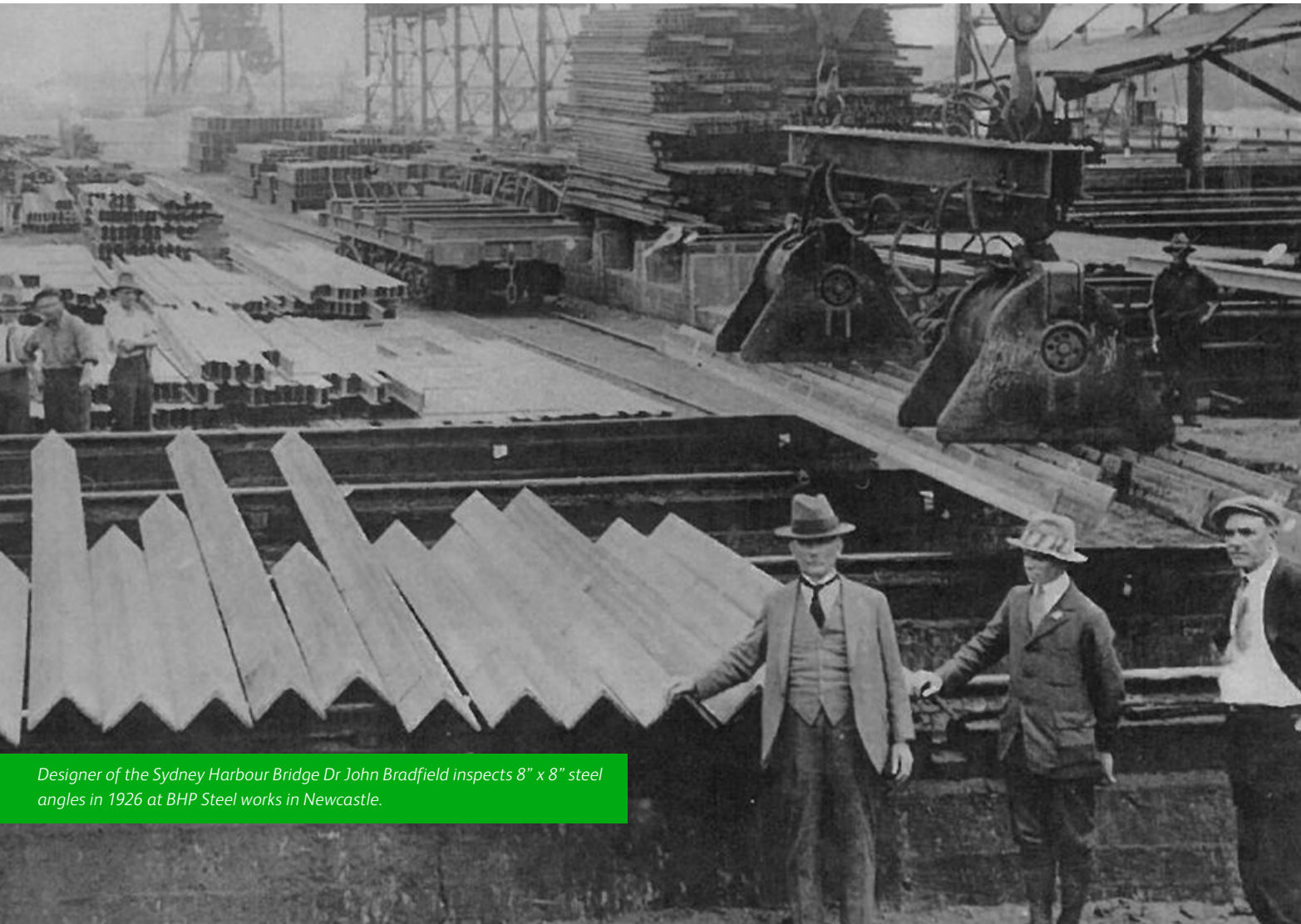
Our good to great journey

We are nation builders.

We are making conscious, deliberate choices to continue finding ways to be better, work smarter, and offer a superior customer experience. We're on a journey from being a good company to becoming a great one.

We are nation builders – we've been doing it for more than a century and look forward to continuing to play a critical role in shaping modern Australia.

We are building futures through sustainable steel.



Designer of the Sydney Harbour Bridge Dr John Bradfield inspects 8" x 8" steel angles in 1926 at BHP Steel works in Newcastle.

Our operations

We are Australia's only fully vertically integrated steel manufacturer, spanning scrap metal recycling, steel manufacturing and downstream distribution.

Our extensive national network employs more than 5,000 people in 140 locations across Australia. Consisting of recycling assets, steel manufacturing, rod, bar and tube mills, our widespread network includes distribution and processing hubs. Our global footprint includes recycling centres in the US and Europe, trading offices in India and Hong Kong, and a manufacturing centre in China.



RECYCLING

As part of InfraBuild's integrated local supply chain, our recycling operation contributes around 1.4 million tonnes each year of recycled metals into our steelmaking operations.

We are an industry leader in the supply of processed ferrous scrap products to our domestic steel mills in Sydney and Melbourne. Additionally, we have an extensive non-ferrous business supplying domestic and international markets with high quality products for recycling.

With 26 Australian recycling facilities as well as partnering with a large scrap metal dealer and transport network, our national footprint provides metal recycling solutions to a broad range of scrap metal generators, including households, local government, mining, demolition, and waste companies to provide local recycling solutions.

Internationally, we own and operate recycling centres in Poland, the US and Hong Kong. Additionally, we have global scrap metal traders working in India, China, South Africa, Netherlands, Spain and the UK.



MANUFACTURING

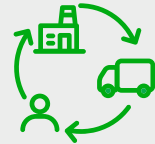
We have an integrated steelmaking and manufacturing network, comprising two electric arc furnaces (Rooty Hill, Sydney; and Laverton, Melbourne) producing steel billet and four Bar and Rod rolling mills in Laverton, Rooty Hill, Newcastle. We also have three tubular rolling mills in Newcastle, Acacia Ridge and Dalian, China.

We supply a range of products to steel distributors nationally, including our own branded distribution and reinforcing retail businesses. Products marketed include rod, bar, tubular and structural steels.

InfraBuild's wire team operates two wire mills in Newcastle and Geelong and is Australia's largest manufacturer of wire for construction, manufacturing, and rural applications.

Waratah Fencing and Cyclone Fencing are InfraBuild wire product brands with national distribution through regional outlets supplying agricultural products, including fencing and hardware.

InfraBuild's mesh team supplies high quality mesh products to the Australian market via high volume manufacturing machines at three facilities located close to market at Sunshine, Revesby and Acacia Ridge.



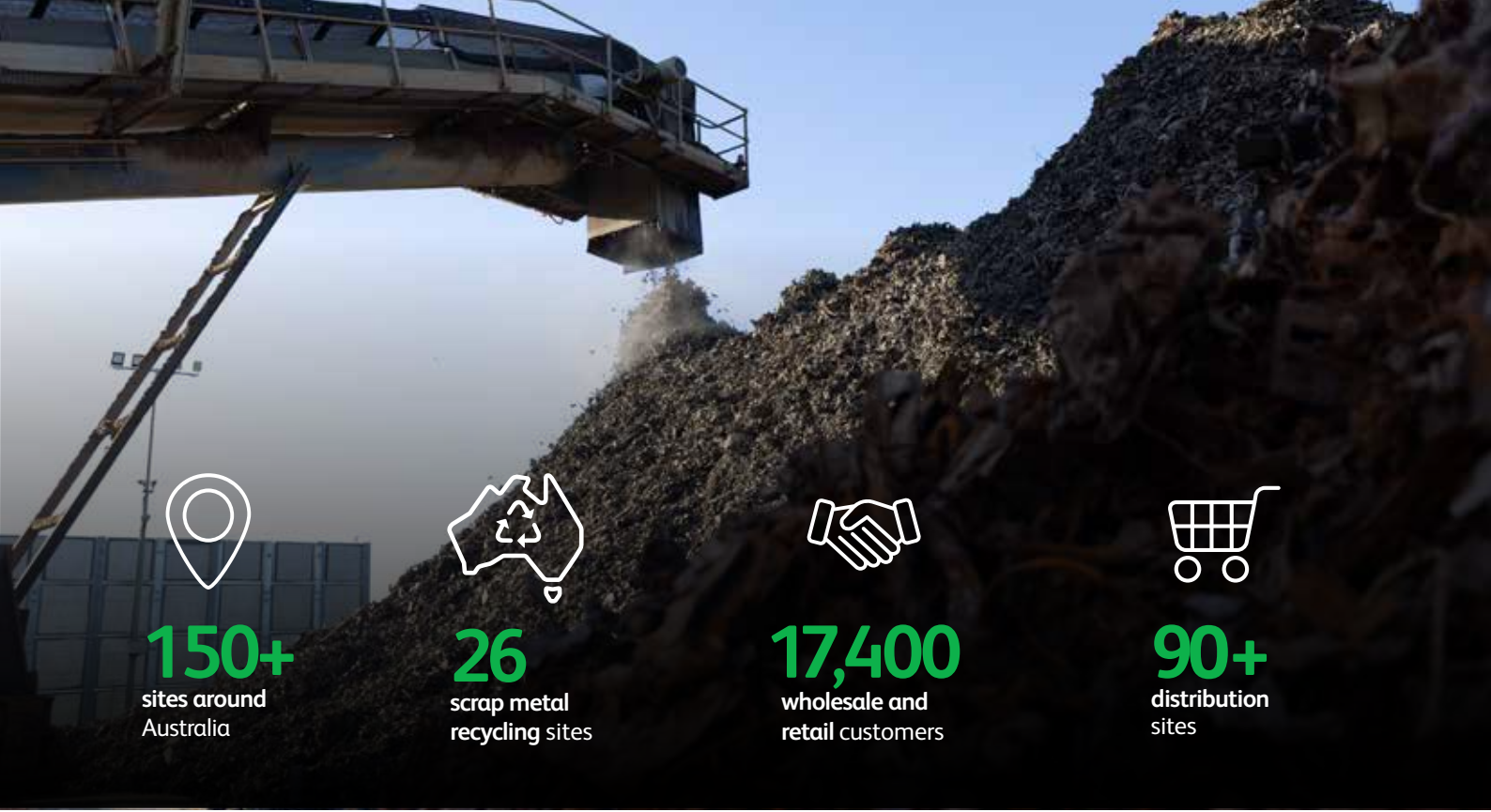
DISTRIBUTION

We have a significant Australian footprint, with a network of 109 retail and processing sites, providing quality products and technical expertise to partners in the construction, mining, transport, manufacturing, infrastructure, and agricultural sectors.

Our steel-in-concrete distribution stream includes InfraBuild's Reinforcing team; a full-service supplier of reinforcing solutions to tier 1 construction companies and major infrastructure projects across Australia, and the Australian Reinforcing Company (ARC); which services Australia's residential, mining and small-to-medium commercial and industrial business segments.

We supply innovative solutions from prefabricated reinforcing, and patented high-strength steel to state-of-the-art BIM modelling, enabling the safe, efficient, and sustainable construction of Australia's infrastructure and built environment.

InfraBuild Steel and Tube customers are from the engineering, infrastructure, commercial, construction, fabrication, manufacturing, mining and rural sectors.



150+
sites around
Australia



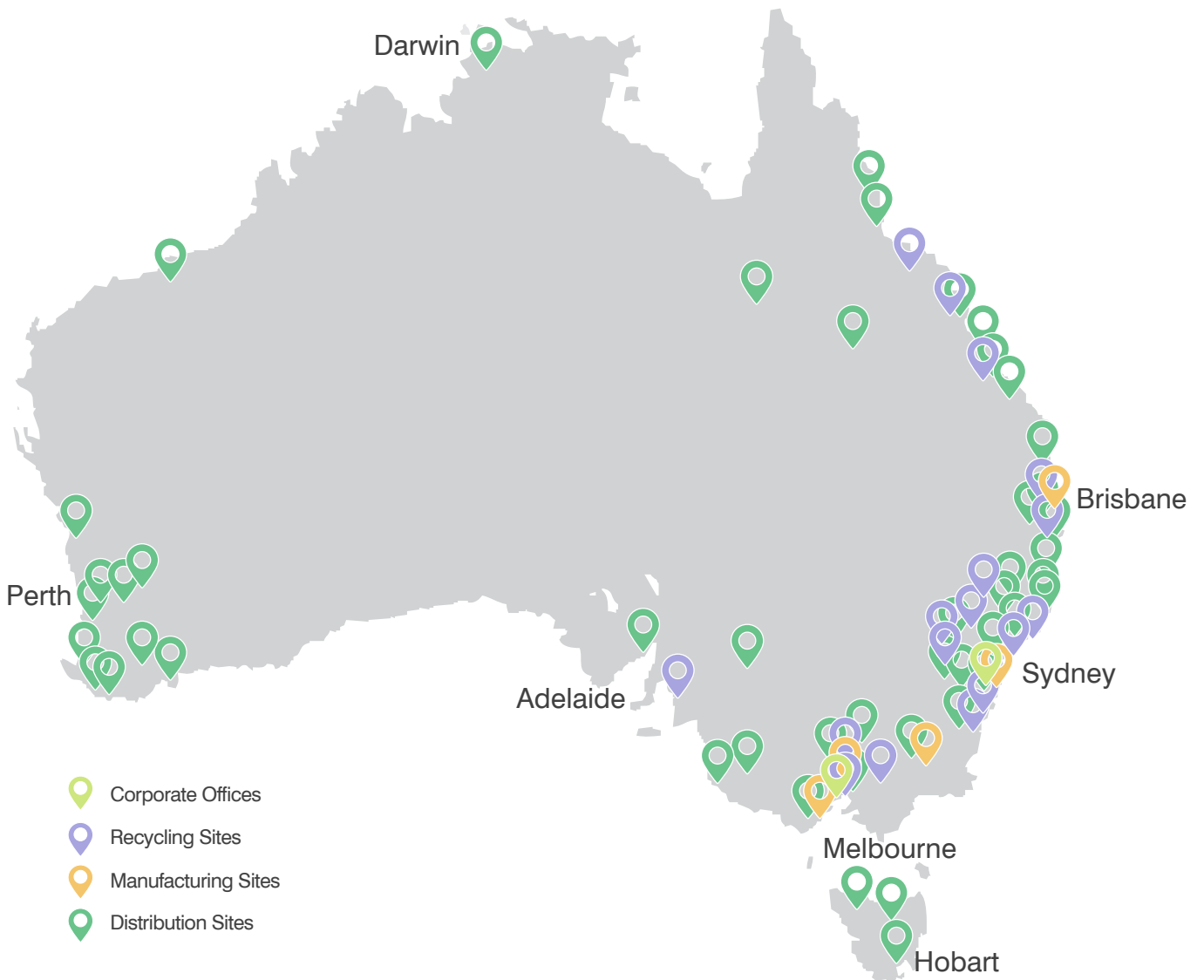
26
scrap metal
recycling sites



17,400
wholesale and
retail customers



90+
distribution
sites



Socially sustainable procurement



Switch to renewable energy



Market environment and policy settings



Optimisation and innovation



Sustainability

InfraBuild is redefining steel as a green building material and helping companies improve the sustainability credentials of their projects.

Our CN30 (carbon neutral by 2030) objective sets a clear target for InfraBuild to be a low carbon emission, carbon neutral, steel manufacturer by 2030.

Investors and other stakeholders are increasingly seeking to better understand the implications of climate-related risks on businesses' long-term earning potential and viability. Climate-related risks include those related to transitioning to a lower-carbon economy and the physical impacts of climate change.

Decarbonisation

InfraBuild is redefining steel as a green building material and is helping companies everywhere improve the sustainability credentials of their projects.

We are committed to reducing our embodied carbon footprint by making sustainable steel and the role steel plays in the circular economy, including promoting the recovery, reuse, and recycling of steel and other products.

Recycling scrap metal drives material circularity, reduces emissions, saves on natural resources, and diverts scrap from landfill.

Our electric arc furnaces at Rooty Hill and Laverton use recycled scrap metal to manufacture steel products with lower levels of embodied carbon compared to those made by traditional steelmaking methods.





InfraBuild has been an early leader in transparency with their commitment to carbon neutrality by 2030, and is showing an ongoing commitment to sustainability with their updated environmental product declarations.

Davina Rooney
Chief Executive Officer,
Green Building Council of Australia

Victoria Cross Station - part of the massive Sydney Metro project which has seen supply from InfraBuild Reinforcing and Steel Centre.



Our service brands



Our product brands



Our industry partnerships

InfraBuild is a founding member of the Australian Steel Institute, the nation's peak body representing the entire steel supply chain from manufacturing mills to end users in building and construction, heavy engineering and manufacturing.

We have continuously manufactured in Australia for over 100 years. Through the decades we have forged and maintained strong partnerships, ties and memberships with industry groups and associations across relevant sectors. These include:



Disclaimer

This publication has been prepared by InfraBuild Trading Pty Limited ABN 50 007 519 646 on its own behalf and as agent for each of its related bodies corporate incorporated in Australia.

Please note that any specifications or technical data referred to in this publication are subject to change and/or variation or improvement without notice and no warranty as to their suitability for any use is made. Users of this publication, to ensure accuracy and adequacy for their purposes, are requested to check the information provided in this publication to satisfy themselves as to its appropriateness and not to rely on the information without first doing so.

Unless required by law, the company cannot accept any responsibility for any loss, damage or consequence resulting from the use of this publication.

Photographs shown are representative only of typical applications and are current as of November 2024. This presentation/publication is not an offer to trade and shall not form any part of the trading terms in any transaction.

© Copyright 2024 InfraBuild Trading Pty Limited ABN 50 007 519 646 All rights reserved. Reproduction in whole or in part, in any form or medium without the express written permission of InfraBuild Trading Pty Ltd is prohibited. All images and content, trademarks or registered trademarks are the property of InfraBuild Trading Pty Limited ABN 50 007 519 646.